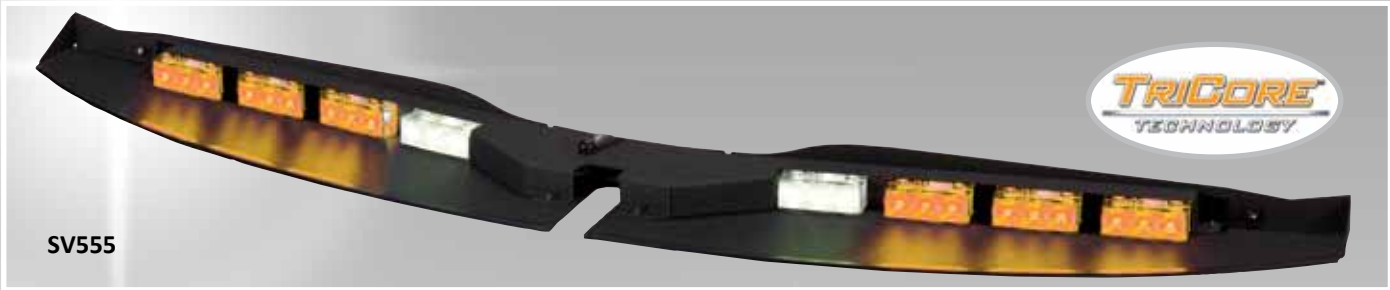


## SUPERVISOR™



SV555

### Design Features

- Thin design keeps you undercover — remains unseen until energized
- Special housing prevents the lights from reflecting back into the driver's eyes
- Vehicle specific designs provide a custom fit
- Easy to install, no drilling required to mount the units
- Lightheades can be independently wired in a variety of flash patterns
- Directional TriCore and LED Lightheades
- MR8 35W takedown lights available for additional scene lighting (not available with TriCore Models)

### Options

- Red, Blue, Amber or White LED or TriCore lightheades
- TriCore, Optix and LED X Lightheades
- MR8 35W Takedownes can be Wired to an External Flasher (not available with TriCore Models)
- LED X Modules also Available with Wide Optics
- Optix Modules also Available with Wide or Hybrid Optics
- 8 lbs
- Draws less than 6 Amps Average
- 12 VDC
- 5 Year LED Warranty

### SUPERVISOR® TC (TriCore)

	Interceptor Utility & Explorer 2011	Expedition 2007-2011	Explorer 2006-2010	Tahoe 2007-2011
(8) TriCore Modules	SV555EXI	SV555EN	SV555FX	SV555TH
(8) TriCore 3 Modules (2 Modules upgraded to White)		SV555EN-2W	SV555FX-2W	SV555-TH-2W
(8) TriCore 3 Modules ( with center console)			SV555FXC	
(8) TriCore 3 Modules (center console and 2 module to White)		SV555FXC-2W		



SV555CV

**SUPERVISOR™**

**LED X and Optix**



**SV333**

<b>SuperVisor® Ford F150 (2004 - 2008) - Split Design</b>	
(8) LEDX Modules with (2) 35w MR8 Work Lights (Split design w/2 Fans)	SV144F150
(8) LEDX Modules, No Work Lights	SV145F150
(4) Optix Modules, (2) Optix 3-Ups Modules with (2) 35w MR8 Work Lights	SV135F150
(4) Optix Modules, (2) Optix 3-Ups Modules, No Work Lights	SV136F150
(4) Optix Modules, (2) LEDX Modules with (2) 35w MR8 Work Lights (Split Design w/2 Fans)	SV133F150
(4) Optix Modules, (2) LEDX Modules, No Work Lights	SV134F150
(8) Optix 3-Up Modules, (2) 35w MR8 Work Lights	SV122F150
(8) Optix 3-Up Modules, No Work Lights	SV123F150
<b>Thin Line SuperVisor Interceptor Utility (2011)</b>	
(10) 3-Up Optix LEDs Modules, No Work Lights	SV333EXI
<b>Thin Line SuperVisor Tahoe (2007 - 2011)</b>	
(10) 3-Up Optix Modules (8 Forward Facing & 2 at 45 angle), No Work Lights	SV333TH07
<b>Thin Line SuperVisor Suburban (2007 - 2011)</b>	
(10) 3-Up Optix Modules (8 Forward Facing & 2 at 45 angle), No Work Lights	SV333TH07
<b>Thin Line SuperVisor Silverado (2008 - 2010)</b>	
(10) 3-Up Optix Modules (8 Forward Facing & 2 at 45 angle), No Work Lights	SV333TH07
<b>P. S. SuperVisor Explorer (2006 - 2010)</b>	
Passenger Side only SV, (6) 3-up Optix Modules(No Work Lights)	SV723FX
<b>Thin Line SuperVisor Explorer (2007 - 2010)</b>	
(10) 3-up Optix (8-forward facing, (2) 45 deg angle, without overhead console	SV333FX07
(10) 3-up Optix (8-forward facing, (2) 45 deg angle, with overhead console	SV333FXC07
<b>Thin Line SuperVisor Explorer (2011)</b>	
(10) 3-up Optix	SV333EXI
<b>Thinline Supervisor Expedition (2007-2011)</b>	
(10) 3 up Optix Modules (8) forward facing, (2) at 45 deg angle, no work lights	SV333ENC07
<b>Thin Line SuperVisor Expedition (2007 - 2011)</b>	
(10) 3-up Optix (8-forward facing, 2-45 deg angle), No Work Lights	SV333EN07

## SUPERVISOR™

LED X and Optix



### DIAGRAMS FOR SUPERVISOR



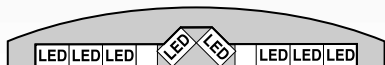
SV144



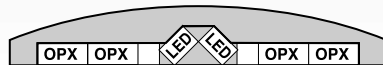
SV133



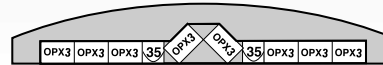
SV723



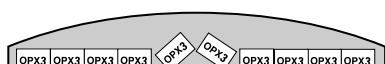
SV145



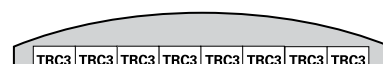
SV134



SV122



SV333



SV555



SV123